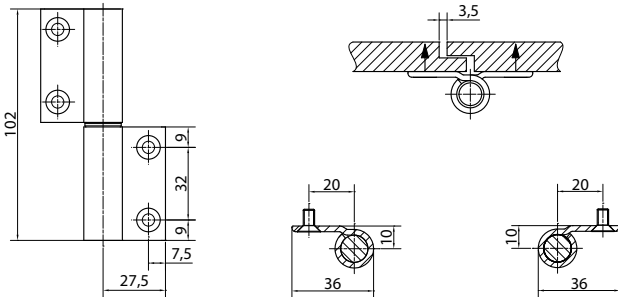


Stainless steel butt hinge SYS-ES13-2



Technical facts

Size:	102,0 mm
Knuckle diameter:	17 mm
Hinge pin diameter:	12 mm
Hinge pin:	Stainless steel
Spring core:	Sleeve: brass, Spring: spring steel Stainless steel spring (additional charge)
Recommended fixation:	Door leaf (directly): counter-sunk screw M5 x 10 with hexagon socket (4 pieces included)
Packing unit:	40 hinges



Tender specification

SYSKO-Stainless steel butt hinge Type: SYS-ES13-2 for rebated partition walls
 Suitably for 13 mm high pressure laminate panels
 2-parts butt hinge for fixation to door leaf without cutout
 Hinge surface ground stainless steel
 Available as standard hinge (ES13-2S) or spring hinge (ES13-2F)
 Unhinge safety for spring hinge (additional charge)

Article	Description	Order number
ES13-2S DIN L	Standard hinge ground stainless steel	84ES132SL
ES13-2S DIN R	Standard hinge ground stainless steel	84ES132SR
ES13-2F DIN L	Spring hinge ground stainless steel	84ES132FL
ES13-2F DIN R	Spring hinge ground stainless steel	84ES132FR
Additional charge	Unhinge safety for spring hinge	MP84AUSH
Additional charge	Sleeve: brass, Spring: stainless steel	MP84FKFES102

Notes
