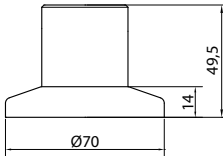


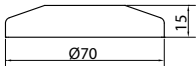
## Technical facts

Flat rosette with short shaft:



For support Ø 35 mm  
Aluminium raw  
Aluminium anodised  
Aluminium powder-coated  
Ground stainless steel

Flat rosette:

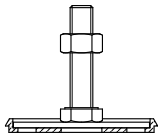


For support Ø 35 mm  
Aluminium raw  
Aluminium anodised  
Aluminium powder-coated  
Ground stainless steel

Heavy duty anchor bolt:

FBN 10/15+23

Support foot:



Steel galvanised or stainless steel (additional charge)  
M10x45 (with clip-on nylon plate) and lock nut



Article	Description	Order number
Flat rosette and short shaft	Aluminium raw	81FLRKS350
Flat rosette and short shaft	Aluminium anodised	81FLRKS35EV
Flat rosette and short shaft	Aluminium powder-coated (11 colours - find colour chart enclosed)	81FLRKS35_ _ _ _ (Please specify RAL no.!)
Flat rosette and short shaft	Ground stainless steel	81FLRKS35ES
Flat rosette	Aluminium raw	81FLR350
Flat rosette	Aluminium anodised	81FLR35EV
Flat rosette	Aluminium powder-coated (11 colours - find colour chart enclosed)	81FLR35_ _ _ _ (Please specify RAL no.!)
Flat rosette	Ground stainless steel	81FLR35ES
Heavy duty anchor bolt		81FBN101523
Support foot steel galvanised	Support foot with lock nut	81GF2
Support foot stainless steel	Support foot with lock nut	81GF5

## Notes

---



---



---



---



---



---



---



---



---



---